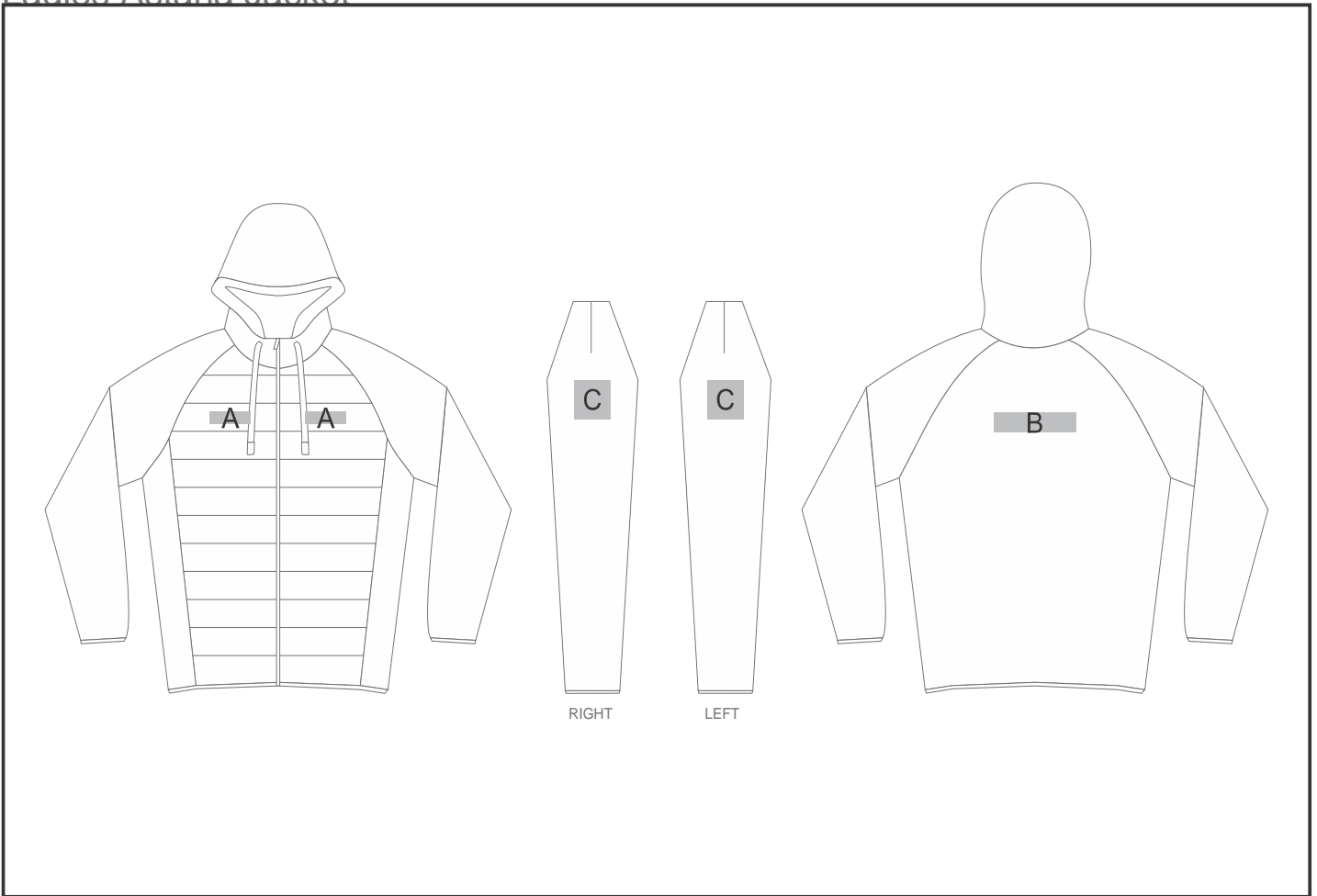


# SLAZ-11425

## Ladies Astana Jacket



### Need to know:

Includes 1 Position Embroidery (setup fee applies)

- Cannot guarantee a 100% straight branding on any clothing item with check or stripe detail.
- The panels on the garment are inconsistent from Small to XL.
- The logo will be branded in the closest left / right chest and back panel, to the standard left/right chest and back position.
- EMB inclusive Parameters: Left/Right Chest or Back = 100mm x 100mm

### Branding Options:

Position	Branding Method (Branding Code)	No. of Colours	Dimension
A	Embroidery (EM-CLOTHING)	N/A	90mm wide x 25mm high
A	Digital Transfer Clothing A6 (DTC-A6)	Full Colour	70mm wide x 25mm high
A	Silicone (STP-A)	N/A	30mm wide x 25mm high
A	Silicone (STP-B)	N/A	50mm wide x 25mm high
A	Silicone (STP-C)	N/A	70mm wide x 25mm high
B	Embroidery (EM-CLOTHING)	N/A	180mm wide x 40mm high

B	Digital Transfer Clothing A6 (DTC-A6)	Full Colour	180mm wide x 40mm high
B	Silicone (STP-A)	N/A	30mm wide x 30mm high
B	Silicone (STP-B)	N/A	50mm wide x 40mm high
B	Silicone (STP-C)	N/A	80mm wide x 40mm high
B	Silicone (STP-D)	N/A	120mm wide x 40mm high

C	Digital Transfer Clothing A6 (DTC-A6)	Full Colour	80mm wide x 80mm high
C	Silicone (STP-A)	N/A	30mm wide x 30mm high
C	Silicone (STP-B)	N/A	50mm wide x 40mm high
C	Silicone (STP-C)	N/A	80mm wide x 80mm high